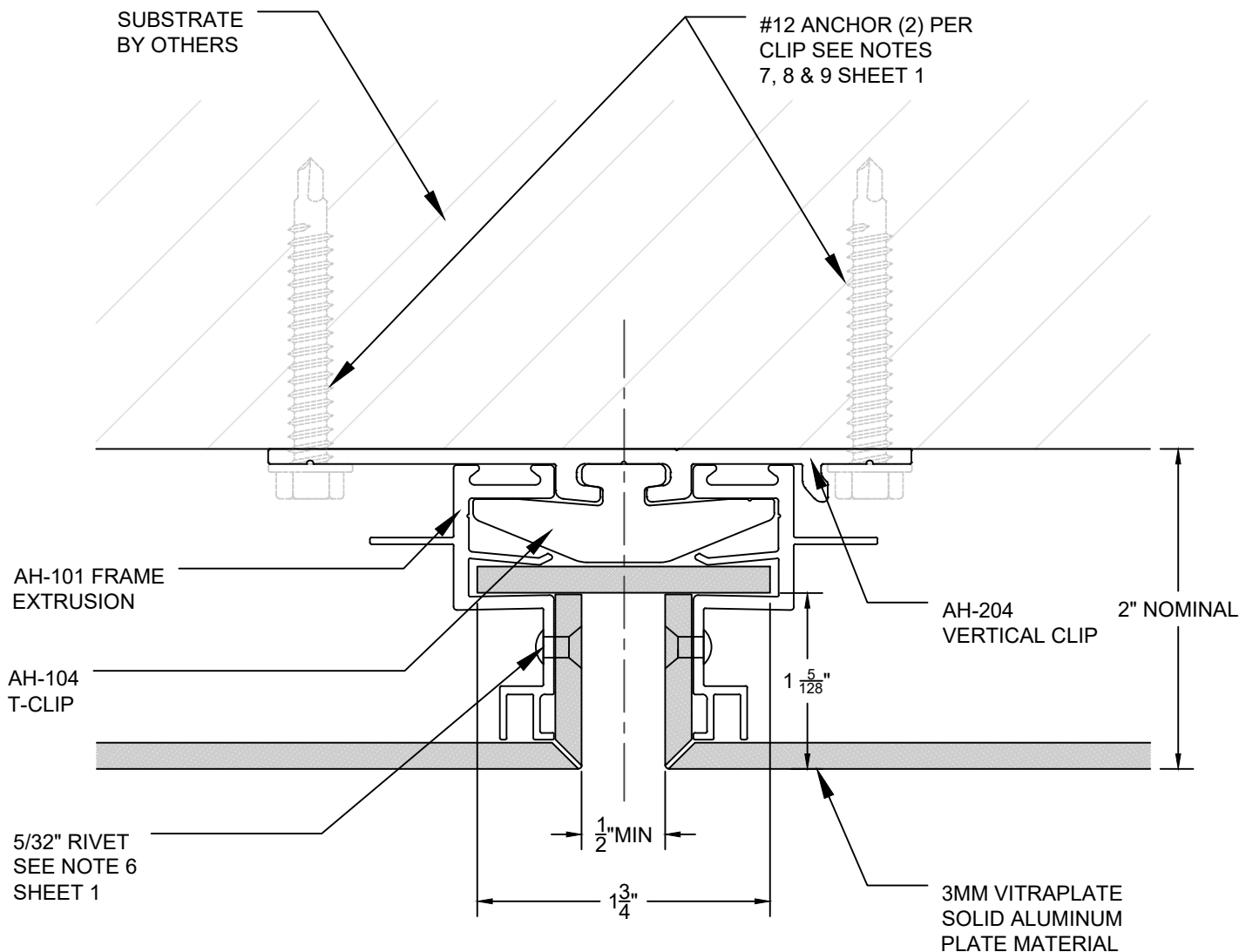


IF SELF TAPPING SCREWS  
PENETRATE WEATHER  
BARRIER, THESE LOCATIONS  
MUST BE SEALED.

#10 X 3/8" SELF TAPPING  
SCREWS MAY BE USED WITH  
EXTERIOR INSULATED WALLS.



Sheet

5

Drawn By

JSJ

Date Drawn

10/12/23

Revisions

No 1 Date 1/18/21

No Date

Project Number

DWG-01

Project

## ARROWHEAD FLEX VERTICAL DETAIL CLIP INSTALLATION

© Copyright Fairview Architectural LLC - Patented and/or Patent Pending



arrowhead  
ARCHITECTURAL PANEL SYSTEMS

www.fairview-na.com